

European Radiology

<https://doi.org/10.1007/s00330-020-06915-5>

CHEST

Interpretation of CT signs of 2019 novel coronavirus (COVID-19) pneumonia

Jing Wu¹ · Junping Pan² · Da Teng³ · Xunhua Xu⁴ · Jianghua Feng⁵ · Yu-Chen Chen¹

Received: 18 February 2020 / Revised: 12 April 2020 / Accepted: 23 April 2020

© European Society of Radiology 2020

COVID-19 CORONAVIRUS PANDEMIC

Last updated: May 07, 2020, 09:27 GMT

<https://www.worldometers.info/coronavirus/>

Coronavirus Cases:

3,836,183

Deaths:

265,364 **6.9%**

Recovered:

1,307,608 **34%**



**Información
Actualizada
A la fecha del
7 de mayo 2020**

Fiebre (85%)

Tos (70%)

Disnea (43%)

Asintomático

**Detección de
Ácido nucleico**

S 65-95%

70 (-)(-)(+) 21.4%

NCP en TC

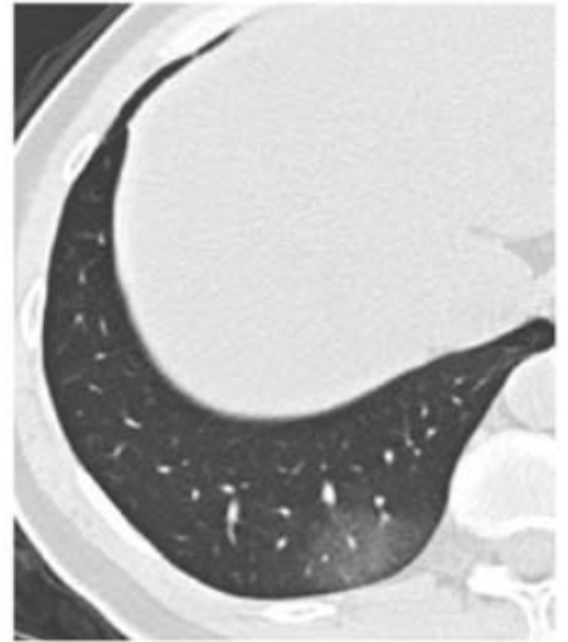
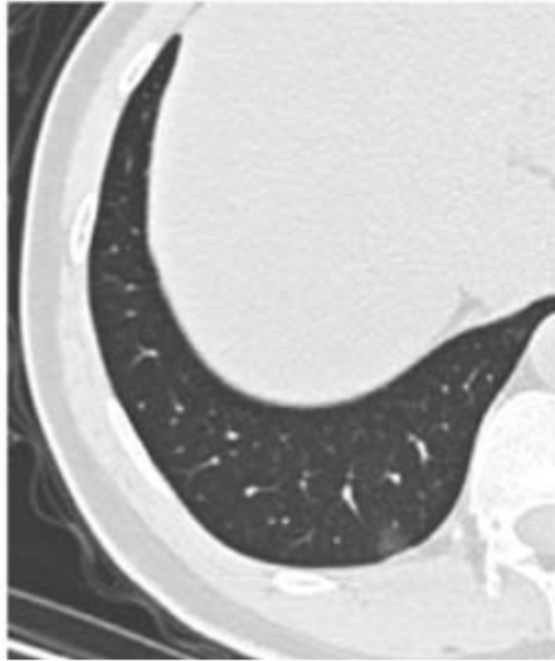


130 China

Ác Nucl 40% F(-)

<https://onlinelibrary.wiley.com/doi/abs/10.1002/jmv.25855>

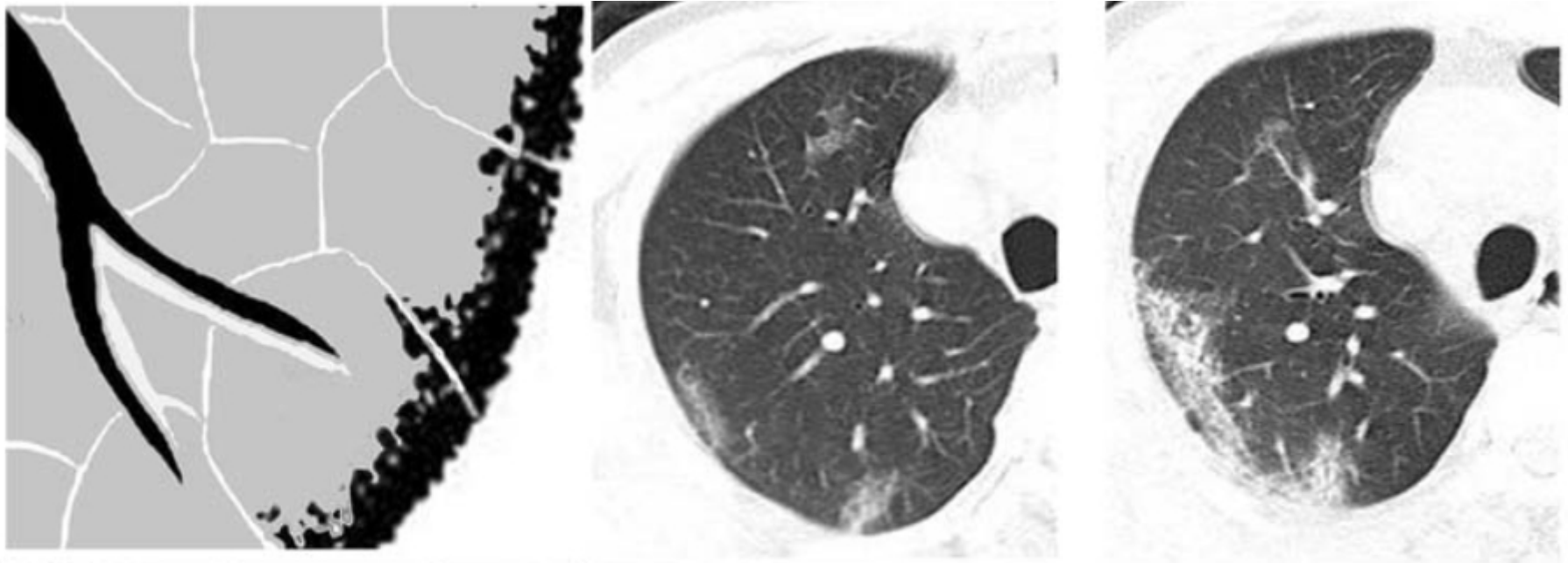
<https://radiologyassistant.nl/chest/lk-jg-1>



Distribución lobar

N 99 (76.1%)

**Tendencia evolutiva
a confluencia**

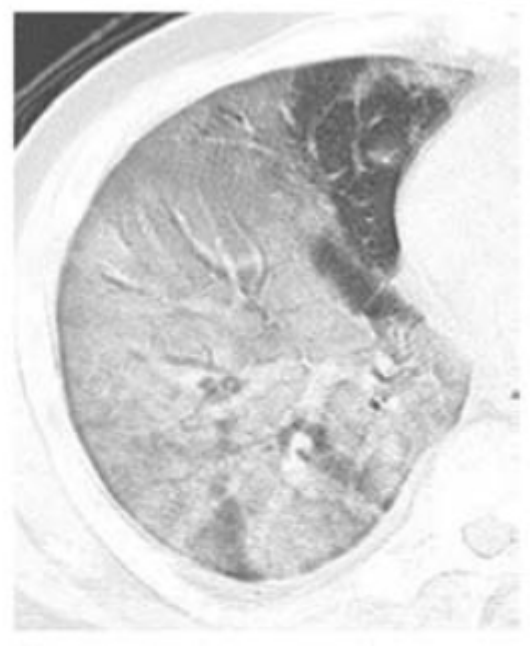
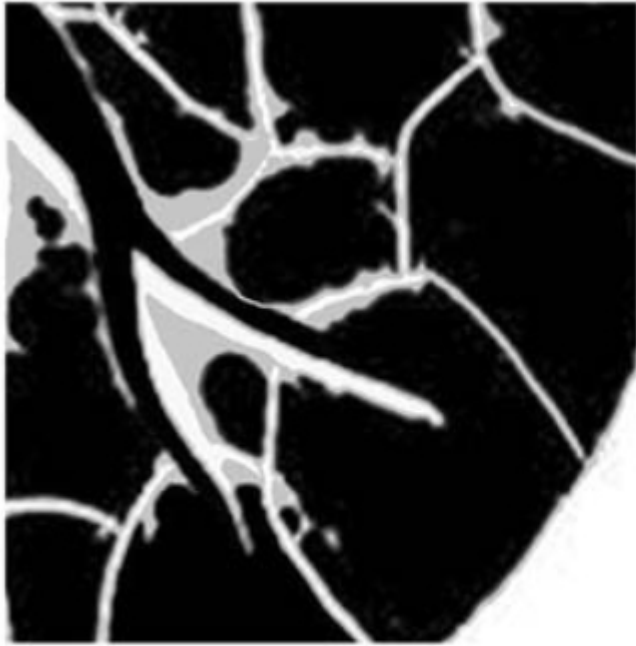


Distribución subpleural

N 102 (78.4%)

**> Vascularización
(sanguínea y linfática)**

Respuesta inflamatoria



Distribución difusa

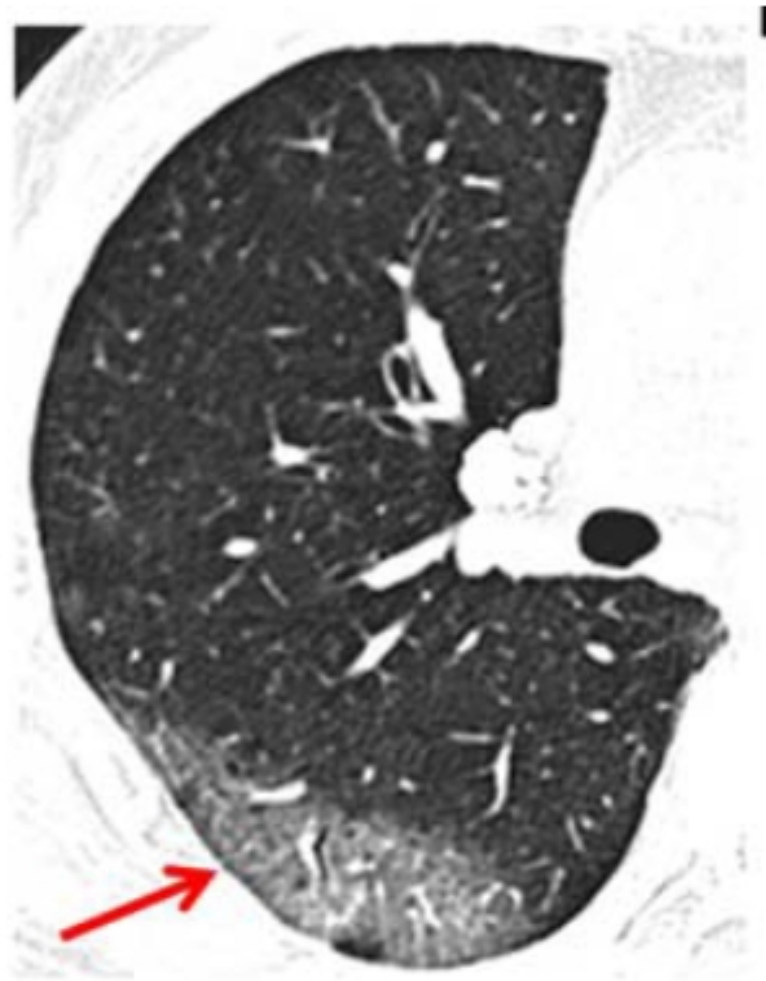
N 8 (6.1%)



Único foco N 9 (6.9%)
Focos múltiples N 113 (86.9%)
Lesiones difusas N 8 (6.1%)

Vidrio esmerilado N 70 (53.8%)

<https://www.itnonline.com/article/chest-ct-findings-patients-infected-novel-coronavirus-2019-ncov-pneumonia%C2%A0>



Descrito por primera vez

Condiciones

distribución subpleural

diámetro máximo de lesión

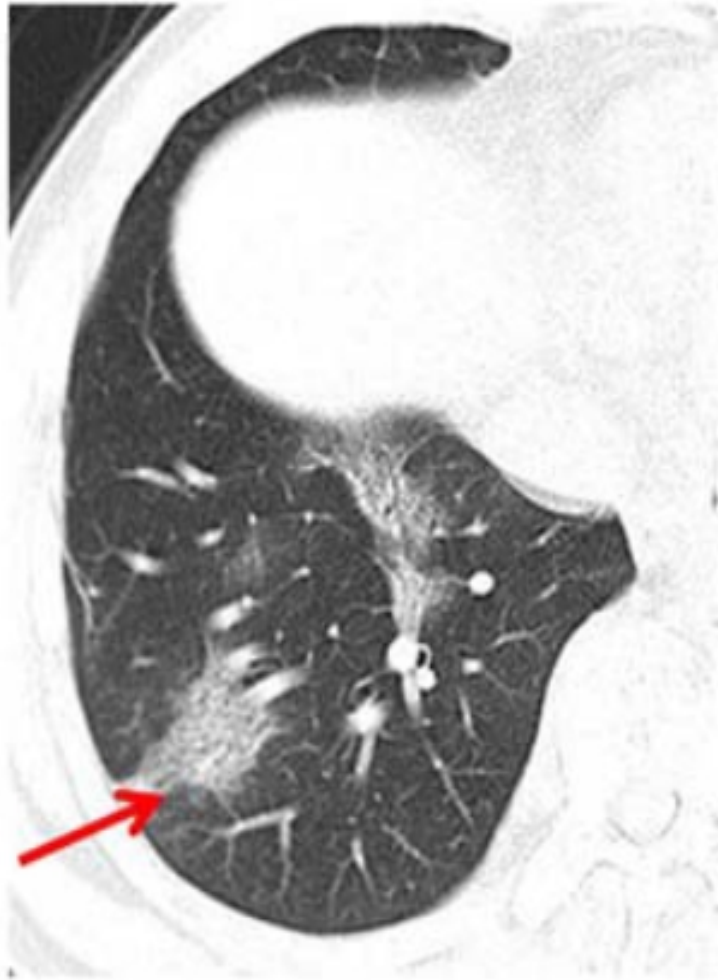
---> paralela a pleura

Confluencia lesiones subpleurales

Característico, no específico

influenza

Signo de la pleura paralela N98 (75.3%)

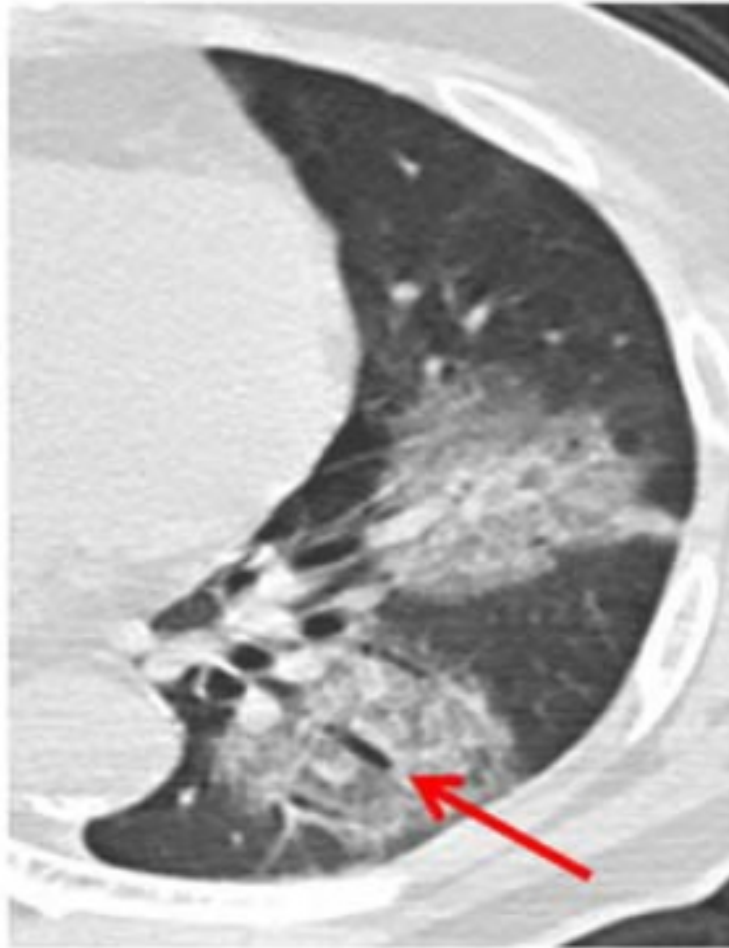


Similar a MERS y SARS

**Evolución
Pronóstico**

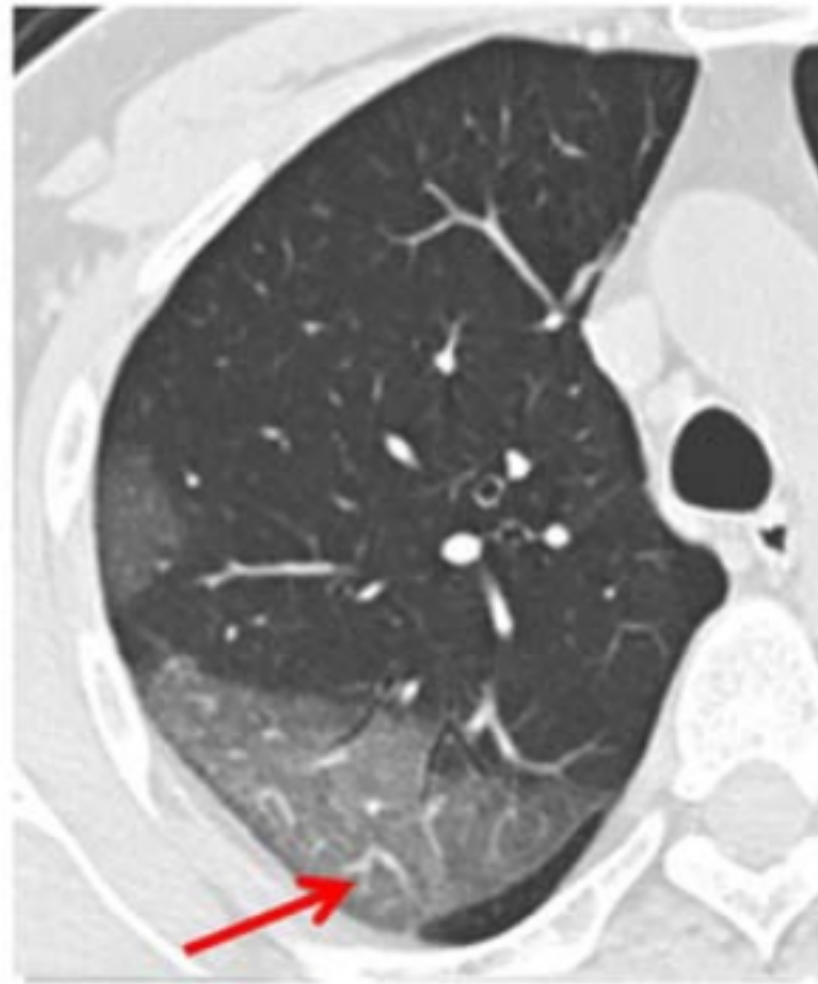
Signo de la piedra pavimentada N 100 (76.9%)

Engrosamiento septo interlobar

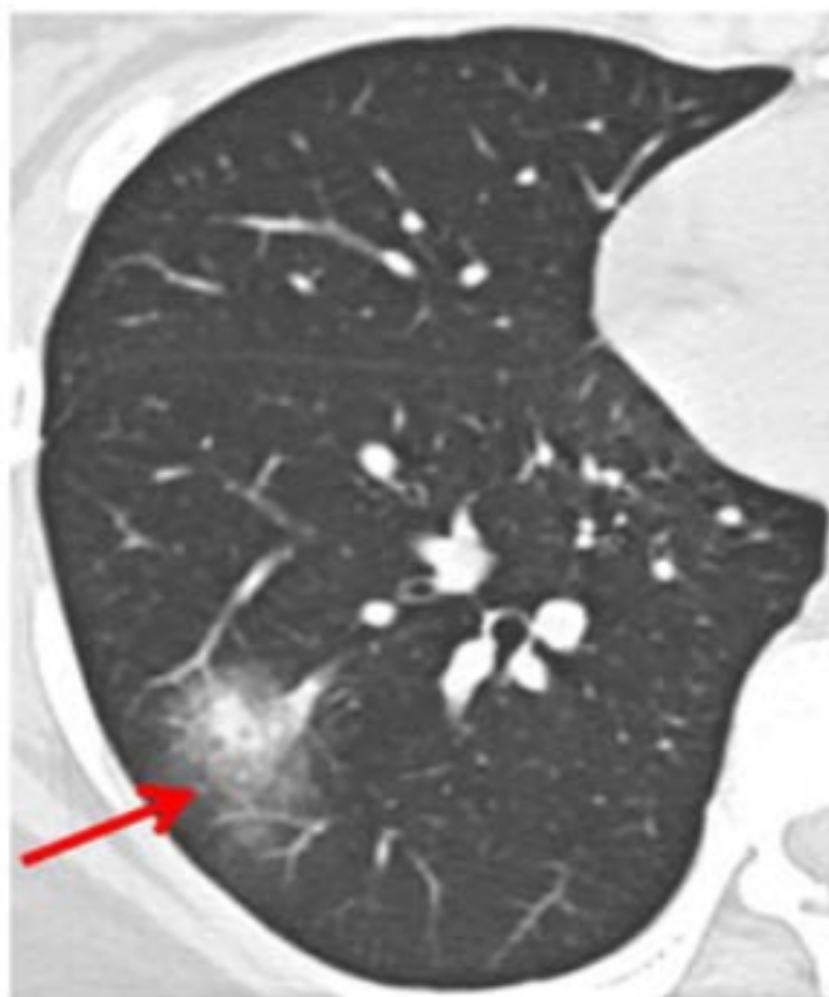


Bronquiectasia N 52 (40%)

Broncograma aéreo N 100 (76.9%)



Signo vascular N 100 (76.9)
Engrosamiento vascular



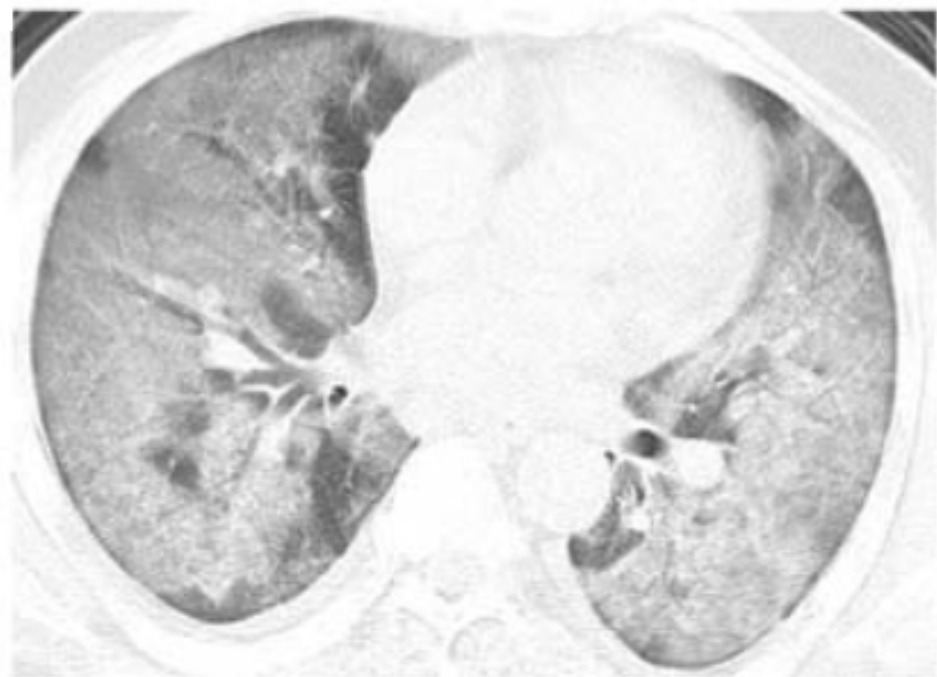
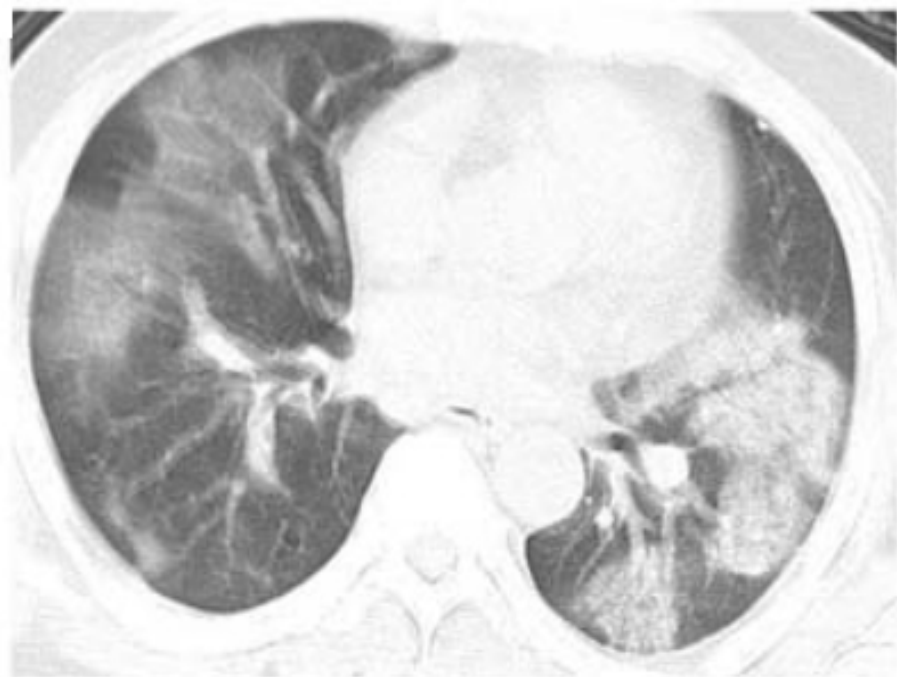
Signo del halo N 18 (13.8%)

**Vidrio esmerilado rodea
nódulo o masa**



Signo del halo invertido N 6 (4.6%)

Vidrio esmerilado central
Forma focal, redonda o luna creciente
Más de 3/4 rodeado
por sombra de consolidación



GRACIAS