

Early T1 Myocardial MRI Mapping: Value in Detecting Myocardial Hyperemia in Acute Myocarditis

Anna Palmisano, MD • Giulia Benedetti, MD • Riccardo Faletti, MD • Paola M. V. Rancoita, PhD • Marco Gatti, MD • Giovanni Peretto, MD • Simone Sala, MD • Edda Boccia, PhD • Marco Francone, MD, PhD • Nicola Galea, MD, PhD • Cristina Basso, MD, PhD • Alessandro Del Maschio, MD • Francesco De Cobelli, MD • Antonio Esposito, MD

From the Experimental Imaging Centre, Radiology Unit, IRCCS San Raffaele Scientific Institute, Vita-Salute San Raffaele University, Via Olgettina 60, 20132 Milan, Italy (A.P., G.B., E.B., A.D.M., F.D.C., A.E.); School of Medicine, Vita-Salute San Raffaele University, Milan, Italy (A.P., A.D.M., F.D.C., A.E.); Department of Radiology, Guy's and St Thomas' NHS Foundation Trust, London, England (G.B.); Department of Surgical Sciences, Radiology Unit, University of Turin, Turin, Italy (R.F., M.G.); University Centre for Statistics in the Biomedical Sciences, Vita-Salute San Raffaele University, Milan, Italy (P.M.V.R.); Department of Cardiac Electrophysiology and Arrhythmology, IRCCS San Raffaele Scientific Institute, Milan, Italy (G.P., S.S.); Department of Radiological, Oncological and Pathological Sciences, "La Sapienza" University of Rome, Rome, Italy (M.F., N.G.); and Cardiovascular Pathology Unit, Department of Cardiac, Thoracic, Vascular Sciences and Public Health, University of Padua, Padua, Italy (C.B.). Received July 19, 2019; revision requested September 5; revision received December 5; accepted January 2, 2020. **Address correspondence to** A.E. (e-mail: esposito.antonio@hsr.it).

Supported in part by a grant from the Italian Ministry of Health (Giovani Ricercatori–Ricerca Finalizzata, GR-2013-02356832).

Conflicts of interest are listed at the end of this article.

See also the editorial by De Cecco and Monti in this issue.

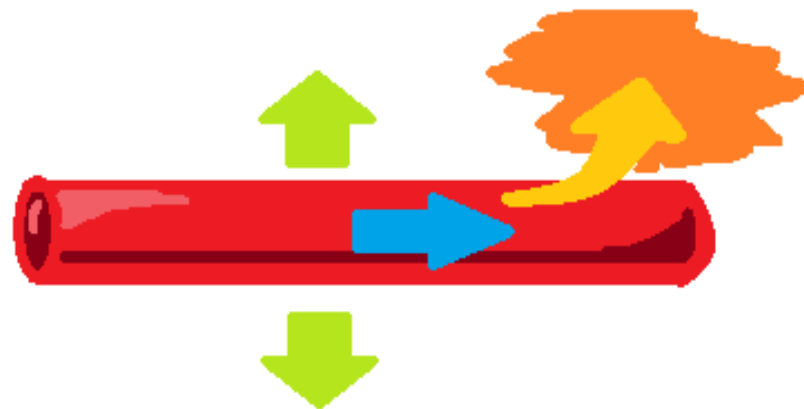
Radiology 2020; 295:316–325 • <https://doi.org/10.1148/radiol.2020191623> • Content codes: **CA** **MR**

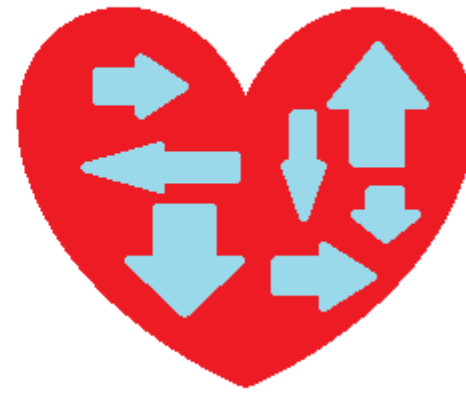


S 49-85%
E 43-100%
Ex 63%

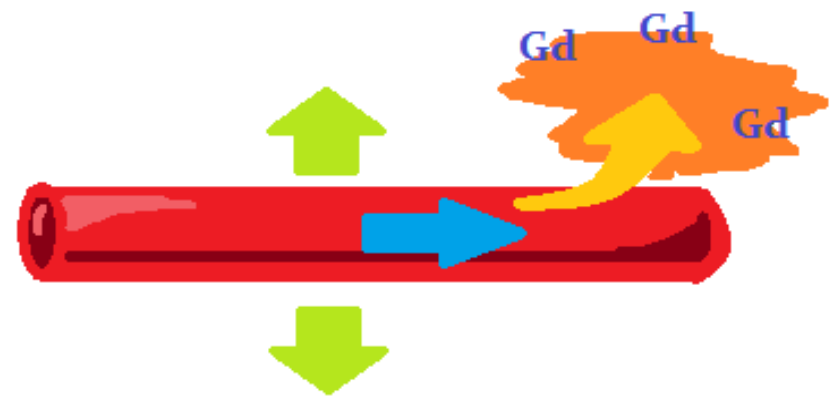
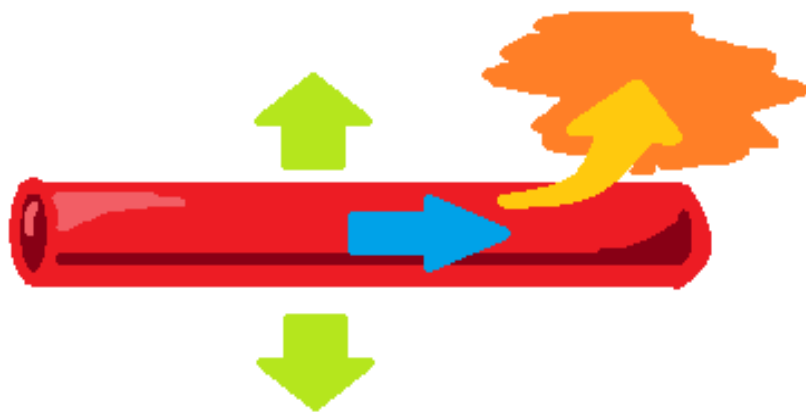


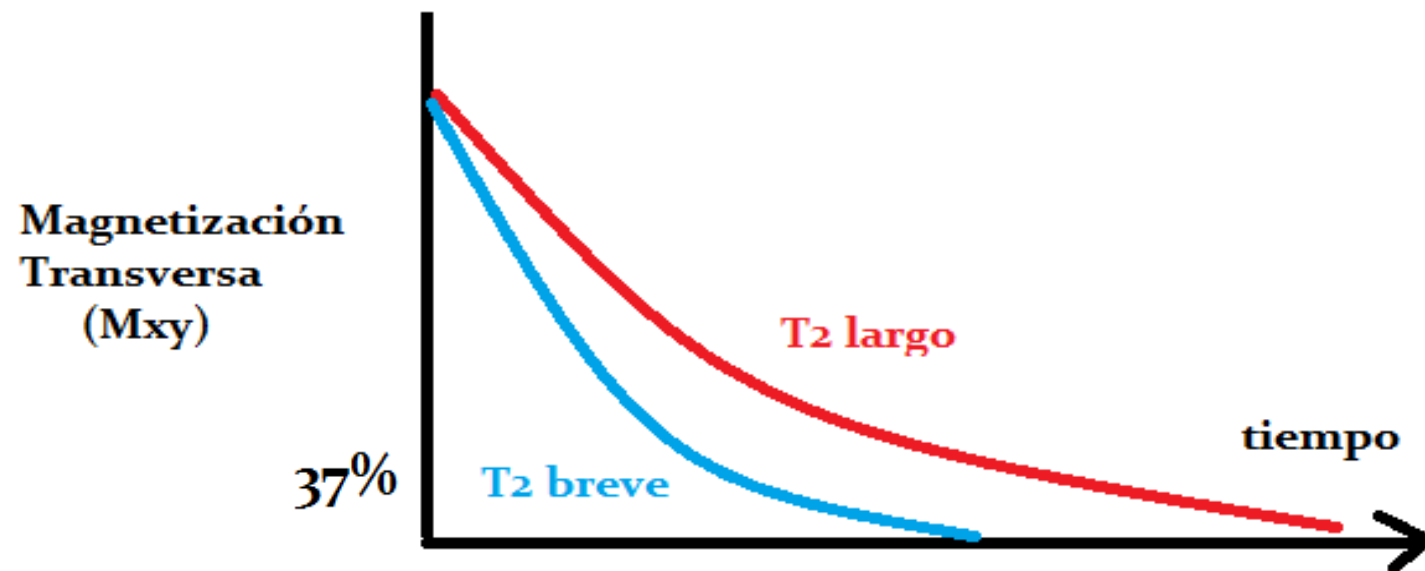
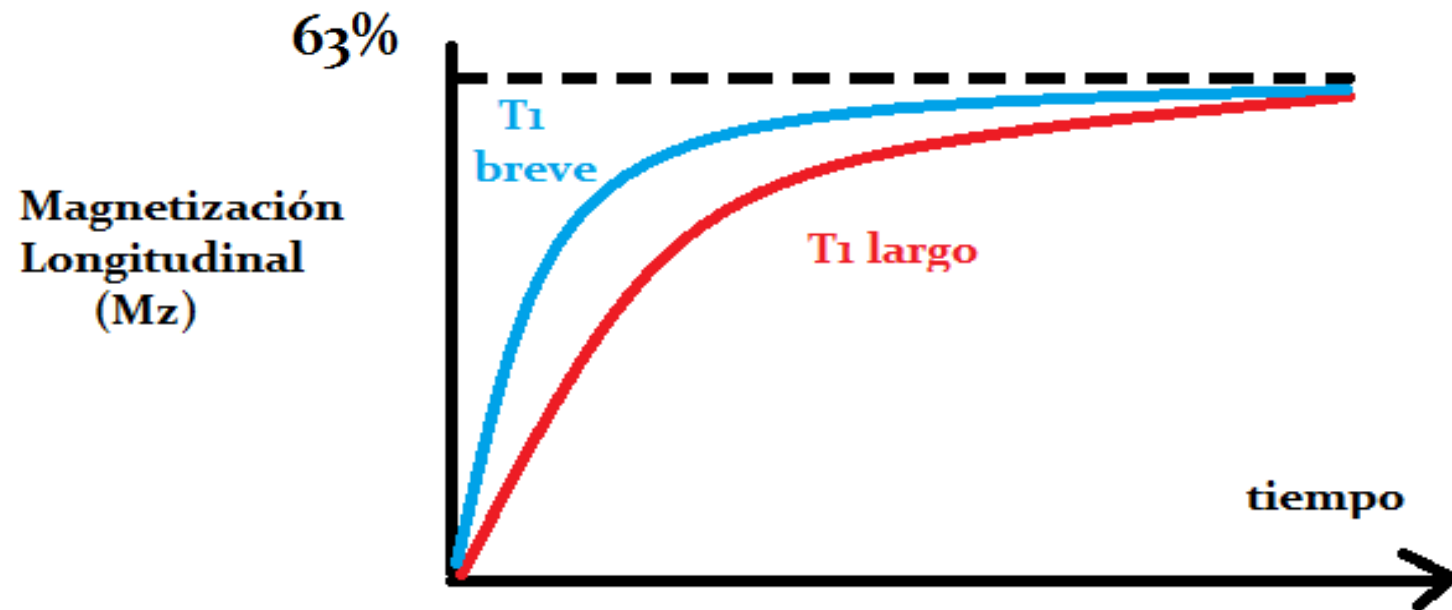
LLC 2009

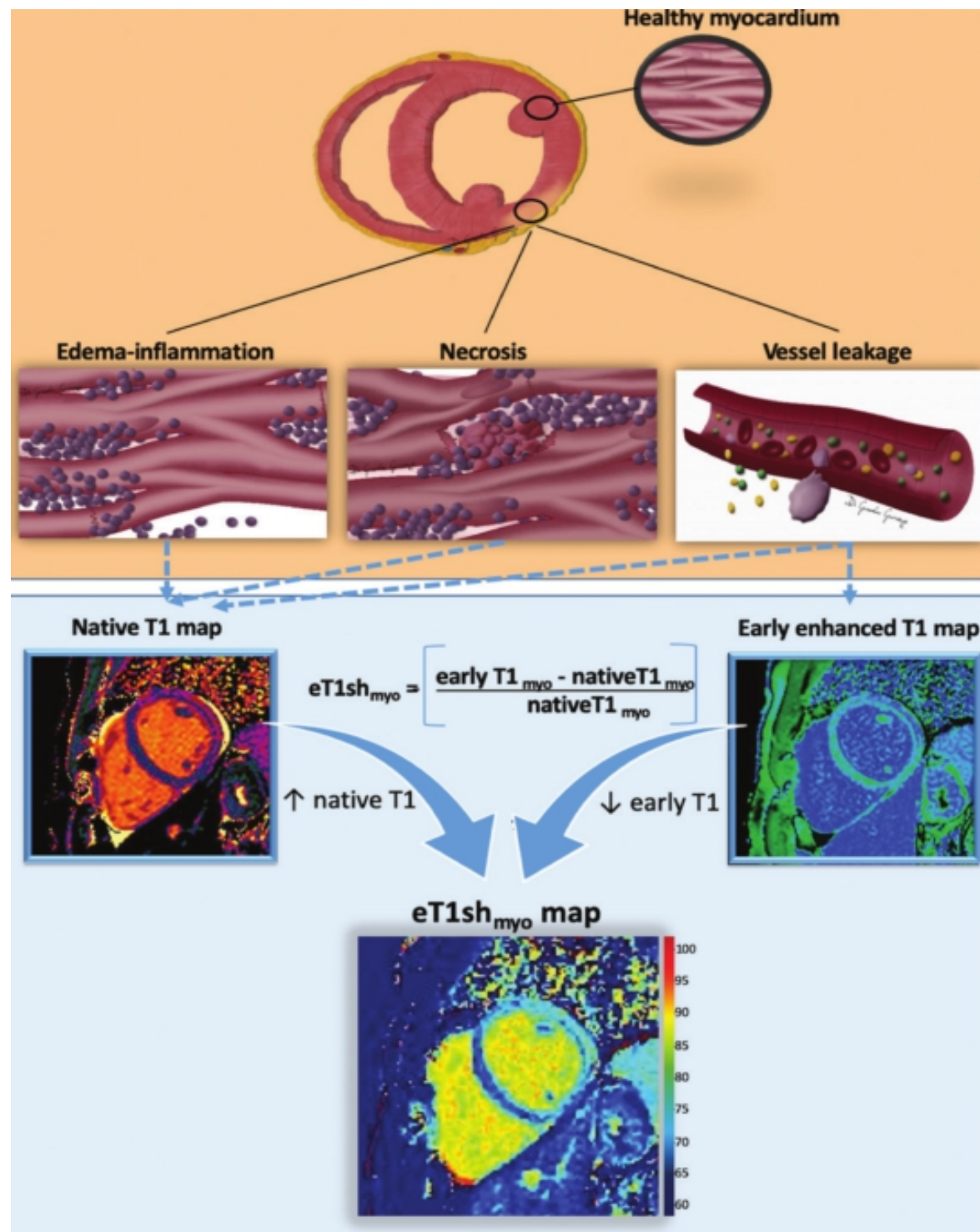




T₁ Gd temprano (2 min) → ? ↑ S







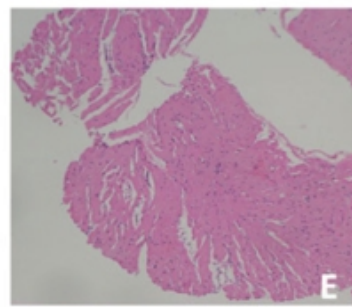
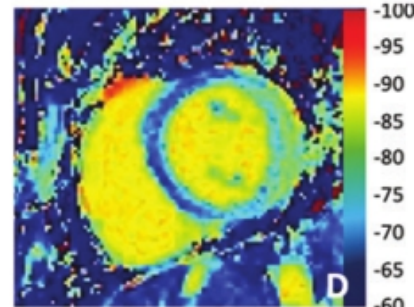
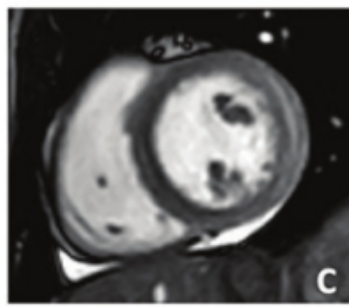
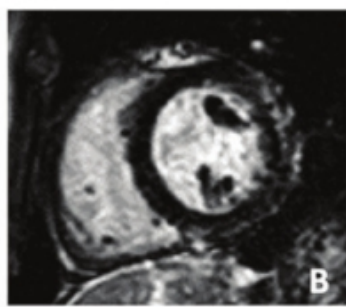
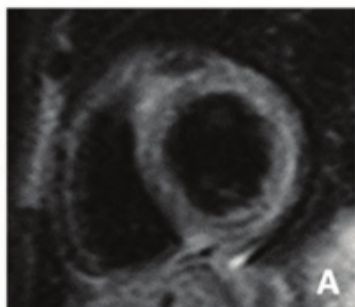
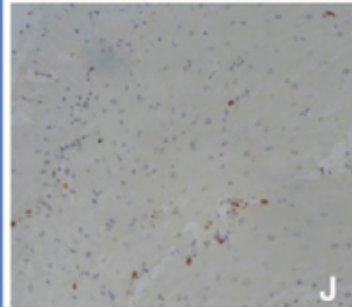
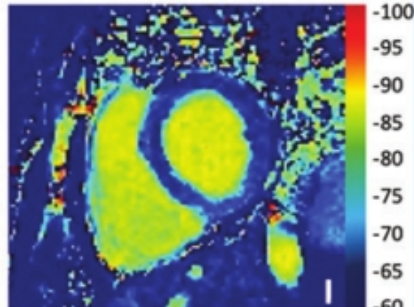
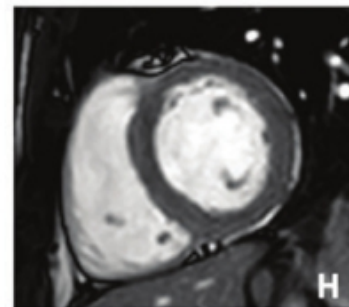
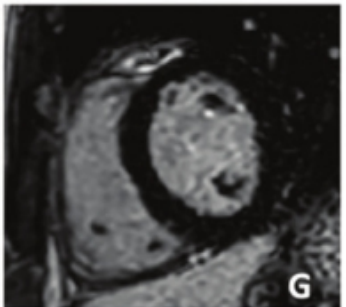
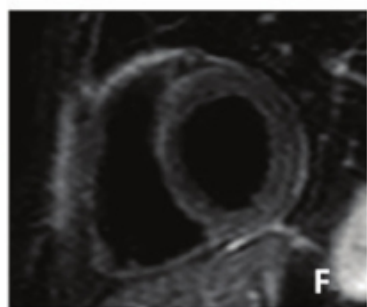
T2**Gd_{tardio}****SSFP****T1_{temprano}****H/E****AM****HC**

Figure 5: Cardiac MRI in a participant with acute myocarditis (AM) and in a healthy control (HC) participant. In a 22-year-old man with AM (top), cardiac MRI shows, A, subepicardial edema involving the lateral wall associated with, B, small subepicardial anterolateral late gadolinium enhancement and, C, hyperintensity on a contrast-enhanced steady-state free precession image. Colorimetric map of early T1 shortening, D, in a participant with a mean value of 71%, over the cut-off of 70% found in our study, shows particular increase of early T1 shortening values in the lateral wall with peak of 78% in the subepicardium (in green). Acute myocarditis was confirmed at, E, histologic analysis with hematoxylin and eosin stain and at, J, immunohistochemical staining. Interstitial edema and cardiac myocytes necrosis was evident in E associated with T-lymphocytes infiltrates ($CD3+ > 7/mm^2$) in J. Cardiac MRI in a 37-year-old HC participant was negative in, F, T2 short- τ inversion-recovery, G, late gadolinium enhancement and, H, contrast-enhanced steady-state free precession. Colorimetric map of early T1 shortening, I, shows normal values ($<70\%$). Mean myocardial early T1 shortening was 61%.

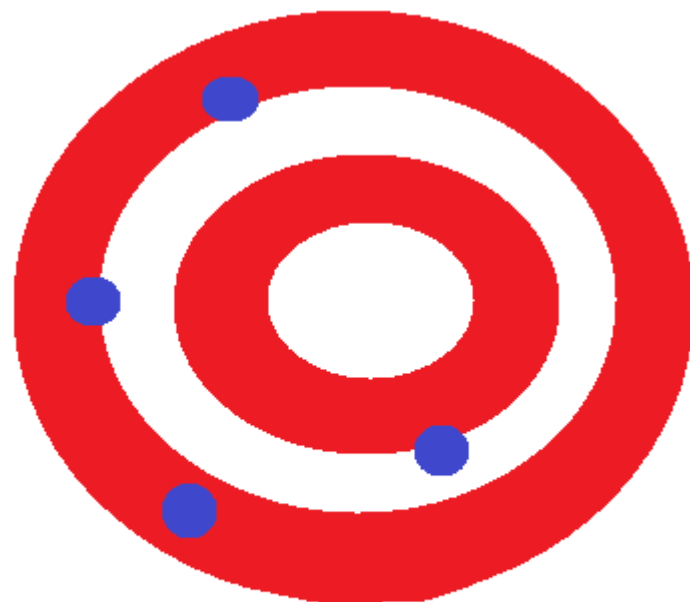
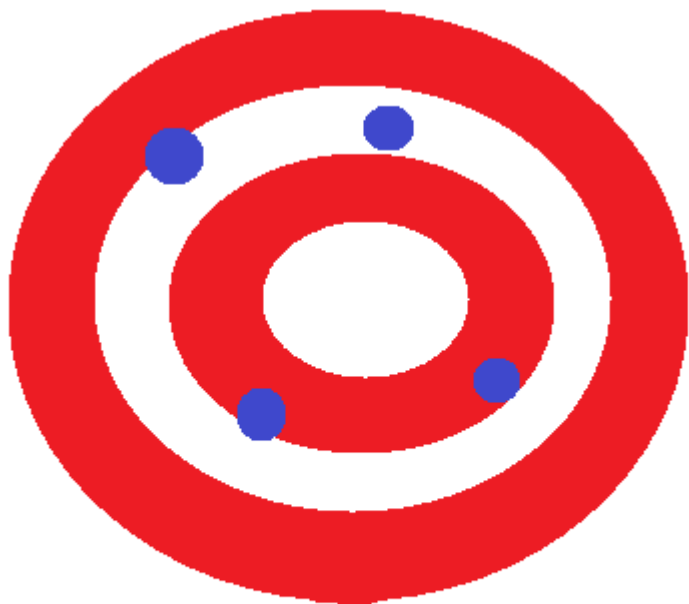
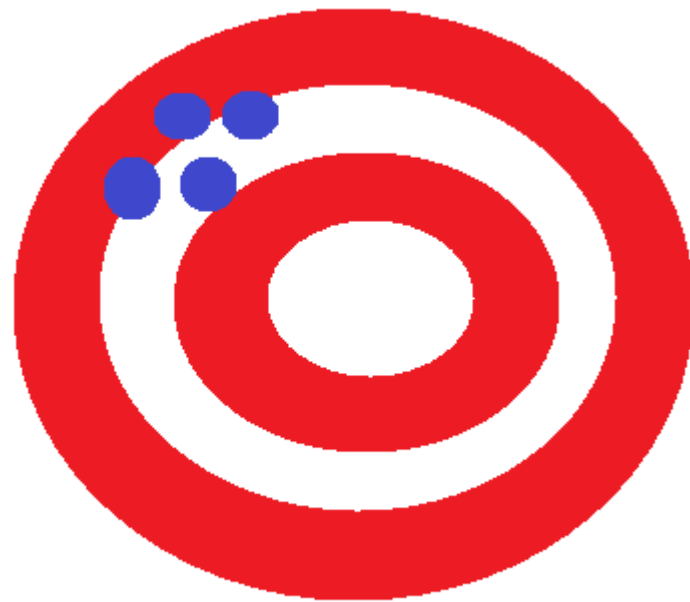
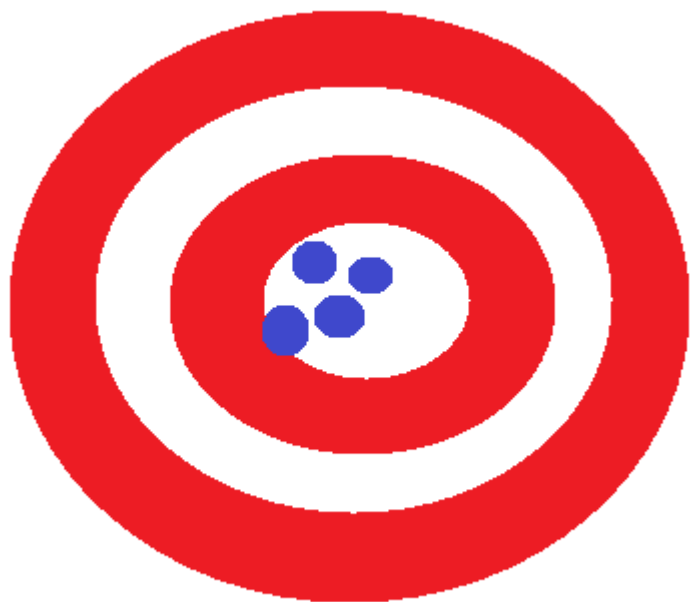


Table 3: Diagnostic Performances of Conventional Cardiac MRI Mapping

Parameter	AUC*	Cut-off Value	Sensitivity	Specificity	Accuracy
Native T1 mapping (msec)	0.93 (0.87,0.99)	>1037	38/45 (84) [71, 94]	18/19 (95) [74, 100]	56/64 (88) [77, 94]
T2 mapping (msec)	0.97 (0.92,1.00)	>50	41/45 (91) [77, 97]	18/19 (95) [73, 100]	59/64 (92) [82, 97]
ECV (%)	0.88 (0.80,0.96)	>26	37/45 (82) [68, 92]	18/19 (95) [74, 100]	55/64 (86) [75, 93]

Note.—Unless otherwise indicated, data are numerators and denominators; data in parentheses are percentages, and data in brackets are 95% confidence intervals. AUC = area under curve, ECV = extracellular volume.

* Data in parentheses are 95% confidence intervals.

Table 4: Early T1 Shortening in Participants with Acute Myocarditis and Healthy Control Participants and Diagnostic Performance in the Study Population

Participants with AM (%)*	HC Participants (%)*	AUC [†]	Cut-off Value (%)	Sensitivity [‡]	Specificity [‡]	Accuracy [‡]
75 (72–78)	65 [61–66]	0.97 (0.94,1.00)	≥70	42/45 (93) [82,99]	19/19 (100) [82,100]	61/64 (95) [87,99]

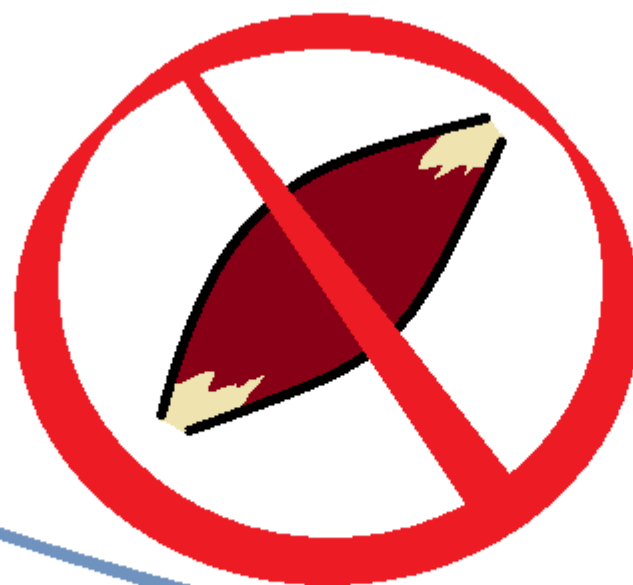
Note.—AUC = area under curve, AM = acute myocarditis, HC = healthy control.

* Data are median; data in parentheses are interquartile range.

[†] Data in parentheses are 95% confidence intervals.

[‡] Data are numerators and denominators, with percentages in parentheses. Data in brackets are 95% confidence intervals.

S 80%
E 87%



S 93%
E 100%
Ex 95%



GRACIAS